

Report to: **Corporate Parenting Panel**

Date: **20 July 2007**

Title of report: **Local Safeguarding Children Board**

By: **Director of Children's Services**

Purpose of report: **To advise the Panel of the inter-agency arrangements in place to safeguard children in East Sussex**

RECOMMENDATIONS:

The Corporate Parenting Panel is recommended to:

- 1. Note the arrangements for the establishment of the Local Safeguarding Children Board in East Sussex and the draft business plan for 2007/08; and**
 - 2. Agree to receive annual reports on the Safeguarding Board business plan.**
-

1. Financial Appraisal

1.1 There are no financial implications. The report describes services that are already provided from within Children's Services budgets.

2. Supporting Information

2.1 In 2003 the Victoria Climbié Inquiry by Lord Laming was published. This report included a recommendation about the inter-agency arrangements for safeguarding children: *'The local authority should chair a Management Board for Services to Children and Families ... The Management Board for Services to Children and Families must include senior officers from each of the key agencies. The Management Board must also establish strong links with community-based organisations that make significant contributions to local services for children and families. The Board must ensure staff working in the key agencies are appropriately trained and are able to demonstrate competence in their respective tasks. It will be responsible for the work currently undertaken by the Area Child Protection Committee'*.

2.2 Later in 2003, Keeping Children Safe: The Government's Response to the Victoria Climbié Inquiry Report and Joint Chief Inspectors' Report Safeguarding Children 2003 advised that *'Reformed and strengthened Area Child Protection Committees, to be called Local Safeguarding Children Boards, will be established on a statutory basis, with all the key agencies represented and having a duty to co-operate.'* The Children Act 2004 placed a duty on Local Authorities to set up Local Safeguarding Children Boards (LSCBs) and on key partners to take part; furthermore, it determined that *'LSCBs will co-ordinate and monitor member agencies' efforts to safeguard and promote the welfare of children.'*

2.3 This report advises the Corporate Parenting Panel on the actions taken to establish the East Sussex Local Safeguarding Children Board and outlines the business plan for 2007/08.

2.4 Prior to 2006, within East Sussex there was an effective Area Child Protection Committee (ACPC) that already provided many of the services and functions of the LSCB. There was already an inter-agency training programme resourced by all member agencies; a joint budget for the ACPC contributed to by all the key statutory agencies; an audit group was in place; and work was already under way to review the child protection procedures. Furthermore, in anticipation of the required changes the ACPC established an LSCB Steering Group in April 2005 which reviewed the structure and organisation of the ACPC and planned the development of the LSCB.

2.5 Changes required to develop the LSCB included increasing the membership, which grew from 26 members to over 40; wider responsibilities than previously, including the development of community child safety initiatives; advocacy for children involved in child protection conferences; and child death overview review teams. In order to achieve this increased work programme there was a requirement for the LSCB budget to be increased and for its internal structure of sub-committees and working groups to be adapted and terms of reference amended. An outline structure and organisation was agreed by the ACPC in September 2005 and in April 2006 a launch conference was held for the LSCB.

2.7 Attached as Appendix 1 are the terms of reference for the East Sussex Local Safeguarding Children Board. These explain the purpose and function of the Safeguarding Board as well as its structure and membership. Attached as Appendix 2 is the draft business plan for 2007/08 which includes a detailed work programme. The LSCB will finalise the business plan and endorse an annual report in September 2007, and the Corporate Parenting Panel may wish to receive this report in the autumn of each year.

3. Conclusion

3.1 Effective arrangements have been put in place to establish a Local Safeguarding Children Board within East Sussex, and the business plan for 2007/08 will meet the statutory requirements of the LSCB.

MATT DUNKLEY
Director of Children's Services

Contact Officer: Fiona Johnson, Head of Children's Safeguards, Tel: 01273 481289

Local Members: All

BACKGROUND DOCUMENTS:

The Victoria Climbié Inquiry - Report of an Inquiry by Lord Laming 2003

Keeping Children Safe: The Government's Response to the Victoria Climbié Inquiry Report and Joint Chief Inspectors' Report Safeguarding Children 2003

Working Together to Safeguard Children 2006

East Sussex Local Safeguarding Children Board

This document sets out the detailed structure and terms of reference for the East Sussex Local Safeguarding Children Board (LSCB).

The document covers:

1. Statement of Values
2. Terms of Reference for the LSCB
3. Structure of the East Sussex LSCB
4. Responsibilities of board members
5. Support requirements of the East Sussex LSCB
6. Members of the East Sussex LSCB and the Safeguarding Board Steering Group

1. Statement of Values

The member agencies of the East Sussex Local Safeguarding Children Board believe that all children living in or visiting the County have the right to:

- Safety and security in a culture of high expectation, which provides protection from harm and exploitation and enables them to develop healthily to meet their full physical, intellectual and emotional potential.

In order for this to be realistic all member agencies are working to the standards within the Children Act 2004 to ensure that:

- All those who work with children and young people know what to do if they are worried about possible harm;
- When concerns are reported, action is taken quickly and sensitively to help children and their families;
- Agencies who provide children and young people with services take steps to ensure they are safe and comply with legal requirements.

2. Terms of Reference for the East Sussex LSCB

The role and scope of the LSCB in East Sussex

The three principal areas of activity that LSCBs are responsible for are outlined within statutory guidance as:

- Activity that affects all children and aims to prevent maltreatment, or impairment of health or development, and ensures children are growing up in circumstances consistent with safe and effective care.
- Proactive work that aims to target particular groups. For example: developing/evaluating thresholds and procedures for work with families whose child has been identified as 'in need' under the Children Act 1989, but where the child is not suffering or at risk of suffering significant harm, and work to safeguard and promote the welfare of groups of children who are potentially more vulnerable than the general population.
- Responsive work to protect children who are suffering or at risk of suffering maltreatment.

The LSCB's relationship with wider arrangements to improve outcomes for children

In East Sussex the LSCB will be part of the wider Children's Trust which has the aim of improving the overall well-being (ie the five Every Child Matters outcomes) of all children in the local area. Whilst the work of the LSCB contributes to the wider goals of improving the well-being of all children, it has a particular responsibility for areas of safeguarding activity and will need to ensure the effectiveness of this work.

The Director of Children's Services together with the Children's Trust have overall responsibility for the delivery of the five key outcomes of *Every Child Matters*. Whereas the Children's Trust has a wider role in planning and delivering services, the LSCB objectives are about co-ordinating and ensuring the effectiveness of what its member organisations do individually and together. The LSCB will contribute to delivery and commissioning through the Children and Young People's Plan and the Children's Trust arrangements.

The LSCB has the responsibility of ensuring the effectiveness and co-ordination of the safeguarding system. The delivery of the safeguarding system, however, remains the responsibility of the individual agencies and the Children's Trust.

The LSCB in essence will provide a scrutiny function for the Children's Trust in the area of safeguarding, and will also be responsible for producing and reviewing procedures, promoting training and carrying out audit and performance monitoring in the area of safeguarding and child protection.

These activities should contribute to the Children's Trust's strategy for children and families and to the Children and Young People's Plan and relevant Local Area Agreements.

The Chair of the East Sussex LSCB will provide regular reports to the Children's Trust Executive Group.

The East Sussex LSCB will have an authoritative and independent voice working within the Children's Trust. The East Sussex LSCB may raise performance issues regarding children's safeguarding directly with partner agencies and the Children's Trust. The East Sussex LSCB may seek independent advice, where appropriate, from external bodies and inspectorates.

The key priorities of the East Sussex LSCB are:

- To ensure that children within East Sussex are protected from harm.
- To co-ordinate agencies' activity to safeguard and promote the welfare of children.
- To ensure the effectiveness of agencies' activity to safeguard and promote the welfare of children through monitoring and review.

The major functions of the East Sussex LSCB are:

- To ensure the co-ordination of child protection activity in East Sussex.
- To evaluate safeguarding activity within East Sussex.
- To provide a scrutiny function for the Children's Trust in the area of safeguarding.
- To produce and review procedures in relation to safeguarding.
- To ensure multi-agency training on safeguarding and promoting welfare is provided which meets local needs.
- To conduct audit and performance monitoring of safeguarding activity.
- To raise public and professional awareness of safeguarding issues.
- To contribute, through its role in monitoring and promoting safeguarding, to the planning of services for children in East Sussex.
- To carry out serious case reviews where abuse or neglect is known or suspected.
- To collect and analyse data on all child deaths within East Sussex.
- To develop procedures to respond to unexpected child deaths in East Sussex.
- To ensure that the wishes and feelings of children and young people and their families are considered in the delivery of safeguarding services.

3. The Structure of the East Sussex LSCB

The East Sussex LSCB will consist of:

- The East Sussex Local Safeguarding Children Board, consisting of all statutory board members, which will meet three times a year.
- The Safeguarding Board Steering Group, which will represent the members and drive forward the business plan meeting six times a year. Members of the Board may be asked to join the Steering Group for specific issues.
- Sub-groups chaired by members of the Board, with participants drawn as required from the LSCB board members or nominated by board members. These groups will carry forward the specific functions of the LSCB. There are two types of sub-groups - short-life working groups which will cease when their specific tasks are completed, and standing sub-groups who fulfil LSCB functions that are ongoing.

Please refer to the attached outline structure chart.

a) East Sussex Local Safeguarding Children Board

Chair: Director of Children's Services Department

Objectives:

- to co-ordinate what is done by each person or body represented on the Board for the purposes of safeguarding and promoting the welfare of children in East Sussex; and
- to ensure the effectiveness of what is done by each such person or body for those purposes.

Membership:

All Statutory Board Members.

Function:

- To review and be accountable for safeguarding activity and agree strategic priorities.
- To inform and influence planning for children and young people in respect of safeguarding.
- To disseminate key messages to agencies.

Meeting Frequency:

The East Sussex LSCB will meet three times a year, to review the business plan and receive progress updates. The Board Members will receive regular briefings on board activities and there will be an annual conference to consider LSCB priorities. Board Members will be expected to contribute throughout the year and will be able to participate in the sub-groups, and raise issues through the Safeguarding Board Steering Group, attending in person if required.

b) East Sussex Local Safeguarding Children Board Steering Group

Chair: Deputy Director, Children and Families, Children's Services Department

Members: Senior representatives drawn from the LSCB Board members

Meeting frequency: 6 times a year

Function: Receive reports from the standing sub-groups, co-ordinate the work of the short-life working groups, manage the LSCB budget, receive monitoring and auditing information, review and monitor the progress of the East Sussex LSCB business plan and agree the agenda for the full Board meetings.

c) East Sussex Local Safeguarding Children Board Sub-Groups

A member of the LSCB Board will chair each of the sub-groups, and take responsibility for driving the business forward.

The standing Sub-Groups of the East Sussex LSCB are:

- Audit & Review
- Training
- Pan-Sussex Procedures
- Child Death Review Panel – to be developed during 2006-2007.

The short-life working groups include:

- Disabled Children
- Forensic Medical
- Child Safety – to be developed during 2006-2007

In addition there are two Child Protection Liaison Groups that meet in the east and west of the county to monitor and review operational practices with regard to child protection.

The terms of reference for all the sub-groups need to be revised and a key task for all these groups will be to complete this by September 2006.

4. Responsibilities of Board Partners.

In accordance with the Children Act 2004 Section 13, the following agencies are required to be board partners of the East Sussex LSCB:

- The Children's Services Department (East Sussex County Council Children's Service Authority designated in Section 13.1 Children Act 2004 as responsible for establishing and leading the LSCB)
- The 5 East Sussex District/Borough Councils
- Sussex Police
- Probation Services for Sussex
- Strategic Health Authority
- Primary Care Trusts which cover East Sussex
- The East Sussex Youth Offending Team
- NHS Trusts and Foundation Trusts, all or most of whose hospitals, establishments, and facilities are situated in East Sussex
- Children and Family Court Advisory and Support Service (CAFCASS)
- Any person providing services under section 114 of the Learning and Skills Act 2000 (s. 21) in East Sussex
- Other agencies in the private and voluntary sector delivering services to children in East Sussex to be designated in agreement with the LSCB.

Section 13.7 of the Children Act 2004 requires the board partners and Children's Services Authority (East Sussex Children's Services Department) to co-operate in the establishment and operation of the Local Safeguarding Children Board.

The Board Partners will need to:

- Designate a lead senior officer for children's safeguarding who will represent their authority on the LSCB and act as a point of contact for their organisation.
- Be able and prepared to report to the LSCB on their activities to promote and safeguard the welfare of children.
- Participate in the activities of the LSCB as appropriate.

Board Members Person Specification (taken from DfES Guidance)

The designated lead officer will need to be able to:

- Speak for their organisation with authority
- Commit their organisation on policy and practice matters
- Commit resources on behalf of their organisation
- Hold their organisation to account

Expectations of Board Members

- Attend and participate in the East Sussex LSCB (substitutes should be clearly identified)
- Chair/lead a sub committee (as required)
- Allocate resources to LSCB projects
- Be responsible for ensuring effective communication between the LSCB and the organisations they represent.
- Champion children's safeguarding within their organisations and link to other organisations, where appropriate, for example Drug Action Team (DAT), Domestic Violence Forum, etc

5. Support Requirements of the East Sussex LSCB

The East Sussex LSCB will require:

a) Direct professional support from:

- Legal Adviser provided by East Sussex CC
- Head of Children's Safeguards provided by East Sussex CC
- Training Manager provided by East Sussex CC
- Designated and Named Nurses provided by Hastings & Rother PCT & East Sussex & Weald PCT
- Designated GP provided by Hastings & Rother PCT
- Designated Doctor provided by East Sussex Hospitals NHS Trust
- Police Professional Adviser provided by Sussex Police

Part of these officers' time will need to be available for the work of the board and will be a continuation of the previous East Sussex ACPC arrangements, although there will need to be an increase in the contribution of the paediatrician, police and Head of Children's Safeguards to enable the development of Child Death Review Panels.

b) Operational staff to work on behalf of the Board

- Administration staff time (0.5) – a continuation of the current ACPC provision.
- A Training and Development Officer - a continuation of the current ACPC provision.
- An audit and information officer – this is a new requirement and will be developed throughout 2007/2008.

c) Operational Budget

The budget is required to cover the following areas:

- Administrative costs of the Board
- Publications and Publicity (including child safety)
- Training and Development
- The Commissioning of specific reviews and audits
- Developing participation by young people

The LSCB budget is provided in the following way:

East Sussex County Council	Total contribution	£50,000
Health	Total contribution	£ 35,000
Police	Total contribution	£ 10,000
Probation	Total contribution	£ 5,000
CAFCASS	Total contribution	£ 1,000
TOTAL		£101,000

The proposed budget expenditure will be as follows:

Administration and publicity costs	£ 21,000
Training and development	£ 65,000
Audit & Review	£ 10,000
Young People's Participation	£ 5,000
TOTAL	£101,000

7. East Sussex Local Safeguarding Children Board Members

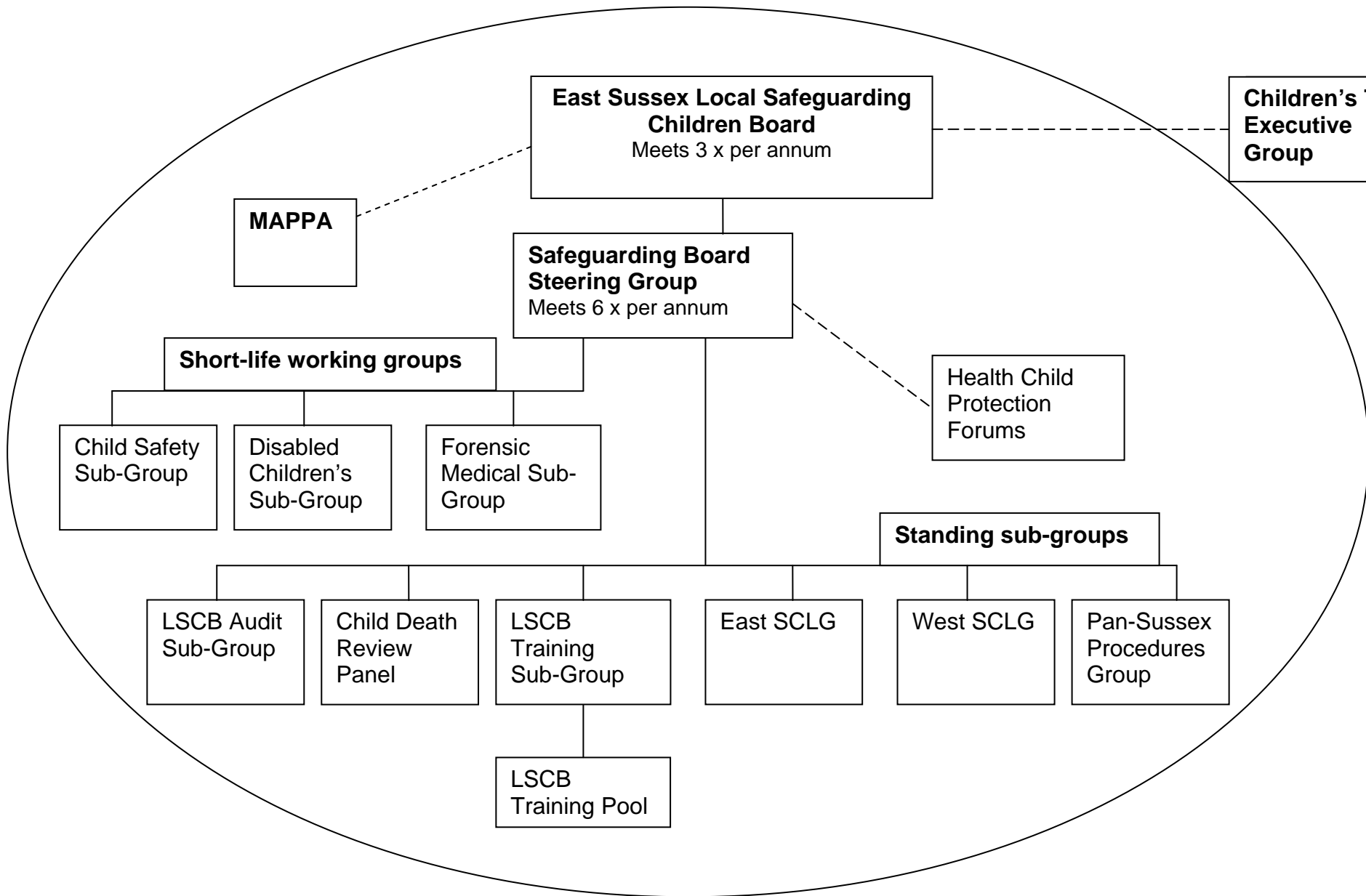
Matt Dunkley – Chair	ESCC: Children’s Services
Helen Davies	ESCC: Children’s Services
Ruth Szulecki	ESCC: Early Years
Fiona Johnson	ESCC: Head of Children’s Safeguards
Angela Reid	ESCC: Legal Adviser
Bob Skinner	ESCC: Training
Penny Lavan	ESCC: Education Welfare Service
Mick McGlynn	ESCC: East SCLG
Nicola McGeown	ESCC: West SCLG
John Hawkins	ESCC: Youth Offending Services
Kate Dawson	ESCC: Adult Social Care
Marcus Gomm	ESCC: Community Safety
Det Supt R Whitfield	Sussex Police
D I Martin Sapwell	Sussex Police
DS Eddie Hick	Police Professional Adviser
Andrea Saunders	Sussex Probation Service
Alison Smith	Hastings & Rother PCT
Jayne Boyfield	East Sussex & Weald PCT
Cathy Stone	East Sussex Hospitals NHS Trust
Carole Mattock	Strategic Health Authority
Martin Lewis	Sussex Ambulance Service NHS Trust
Helen Greatorex	Sussex Partnership NHS Trust
Dawn Sampson	Designated Nurse
Kevin O’Sullivan	Named Nurse
Debbie Barnes	Named Nurse
Dr Tracey Ward	Designated Doctor
Dr Sarah Thomson	Designated GP
Mary Clare Deane	Wealden District Council
Andrew Palmer	Hastings Borough Council
Neil Fuller	Eastbourne Borough Council
Owen Clifford	Lewes District Council
Joy Cooper	Rother District Council
Dave Dowling	East Sussex Rescue & Fire Service
Lesley Young	Secondary Headteacher
Gillian Morrow	Primary Headteacher
Louise Carlyle	Special Education Headteacher
Wayne Wright	Learning and Skills Council
Mark Preston	Connexions
Bridget Langford	NSPCC
Ann Flynn	CAFCASS

Interim Membership of the East Sussex Safeguarding Board Steering Group

Helen Davies, Chair	ESCC Children's Services
Det Supt R Whitfield	Sussex Police
Alison Smith	Hastings & Rother PCT
Fiona Johnson	ESCC Head of Children's Safeguards
DS Eddie Hick	Police Professional Adviser
Dawn Sampson	Designated Nurse
Kevin O'Sullivan	Named Nurse
Debbie Barnes	Named Nurse
Dr Tracey Ward	Designated Doctor
Dr Sarah Thomson	Designated GP

Review of the structure and terms of Reference of the East Sussex LSCB

The Board will review its terms of reference in September 2007.



East Sussex Local Safeguarding Children Board
Meets 3 x per annum

Children's Trust Executive Group

MAPPA

Safeguarding Board Steering Group
Meets 6 x per annum

Short-life working groups

Child Safety Sub-Group

Disabled Children's Sub-Group

Forensic Medical Sub-Group

Health Child Protection Forums

Standing sub-groups

LSCB Audit Sub-Group

Child Death Review Panel

LSCB Training Sub-Group

East SCLG

West SCLG

Pan-Sussex Procedures Group

LSCB Training Pool

Appendix 2

LSCB Business Plan 2007/08

LSCB Objectives	Output	Lead Responsibility	Timescales	Outcomes
Maintain an effective functioning Local Safeguarding Children Board	Ensure that all the sub-groups of the LSCB contribute fully to the LSCB Business Plan.	LSCB Steering Group	Ongoing through 2007/08	The board and relevant sub-groups continue to function effectively
Ensure that there is effective learning from the reviews completed in 2006/07	LSCB to regularly review the action plans arising from the Multi-Agency Reviews.	LSCB Steering Group	September 2007	Improved child protection processes in place
Fewer children suffering from neglect or abuse	Police and Social Care to lead a short-life working group to review the use of the protocol regarding children missing from care and to develop a protocol of inter-agency response to all children who go missing.	LSCB Steering Group	December 2007	Protocols in place - clear responses by all agencies to children who go missing
To ensure that the wishes and feelings of children and young people are considered in the delivery of safeguarding services	To put in place arrangements to ascertain the wishes and feelings of children (including children who might not be ordinarily heard) about the priorities and effectiveness of local safeguarding work.	LSCB Steering Group	March 2008	Consultation and advocacy systems established
Fewer children suffering from neglect or abuse	To implement any recommendations stemming from the Barnardos review of inter-agency systems regarding young people at risk from prostitution, missing from home and involved in substance misuse.	LSCB Steering Group	December 2007	Procedures and policies adapted.
Fewer children suffering from neglect or abuse	All partners within the LSCB implement changes required as a result of the audit against the standards determined in Section 11 of the Children Act 2004.	LSCB Audit group	By March 2008	All statutory agencies meeting the minimum standards defined in the Children Act 2004

LSCB Objectives	Output	Lead Responsibility	Timescales	Outcomes
Fewer children suffering from neglect or abuse	Audit Group to receive the review of private fostering services and to determine the nature of any further audit that is required.	LSCB Audit Group	September 2007	Confidence that private fostering arrangements fully safeguard children
Fewer children suffering from neglect or abuse	To undertake an audit of social care & police files to review whether all referrals involving a criminal offence were being referred to the police.	LSCB Audit Group	March 2008	Practice is in accordance with Working Together and Bichard Audit recommendations
Fewer children suffering from neglect or abuse	Further develop the Child Death Review Panel processes joining with Brighton and Hove LSCB by 2008 if appropriate.	LSCB Audit Group	March 2008	Child Death Overview Panel established and appropriately resourced – systems in place to review all deaths from April 2008
Maintaining and improving the quality of inter-agency child protection interventions	Develop and deliver an agreed programme of inter-agency child protection training.	LSCB Training Group	Complete by March 08	Design, deliver and evaluate the 2004/05 Training and Development Plan
Improved community awareness of child safety and their responsibilities for assisting to protect children	LSCB to Implement the Child Safety Action plan leading from the review of child safety arrangements.	LSCB Child safety Sub-Group	Complete by March 2008	Improved community safety arrangements for children and young people
Maintaining and improving the quality of inter-agency child protection interventions	The LSCB to ensure that the role of refuges in protecting children from harm is clear to all relevant personnel.	LSCB Steering Group	Complete by March 08	Refuges within East Sussex acting in accordance with local policies and procedures
Maintaining and improving the quality of inter-agency child protection interventions	The LSCB to ensure that there are positive working relationships between Refuges and statutory agencies within their area.	LSCB Steering Group	Complete by March 08	LSCB to be confident that Refuges are appropriately engaged in the safeguarding process and that their staff have relevant training.

LSCB Objectives	Output	Lead Responsibility	Timescales	Outcomes
Fewer children suffering from neglect or abuse	To develop a protocol for reviewing the risk posed by alleged perpetrators when they do not have immediate contact with children and there is no prosecution.	Sussex Police & CPLGs	Sept 2007	Protocol in place
Better support for children and young people who have witnessed domestic violence	To review current inter-agency processes in place to intervene to prevent domestic violence adversely affecting children. Better information sharing around domestic violence.	Sussex Police & CPLGs	March 2008	New protocols in place regarding inter-agency responses to domestic violence. Improved information sharing between police and other agencies regarding domestic violence
Improve skills for professionals addressing disabled children's sexuality	Prepare and present 1 day multi-agency course working with disabled children, emerging sexuality.	LSCB Disabled children's group	October 2007	Increased understanding by all agencies of the complexity of the issue
Improve safeguarding and raise awareness of risk to disabled children for support workers	Prepare and present 'Disabled Children and Safeguarding Course' specific to role of outreach and sessional workers.	LSCB Disabled children's group	October 2007	Staff better able to manage the risks
Improve quality of communication during ABE interviews with disabled children	Work with the police to improve the involvement of Disabled children in the ABE interview process building on the success of the ABE interview project.	LSCB Disabled children's group	October 2007	Disabled children being protected to the same standard as other children
Reduce injuries to children (LAA Target)		ESFRS	By 2008/9 the number of children admitted to A&E in Eastbourne and Hastings will reduce to 1576	
Reduce the incidence of bullying experienced by		ESCC Children's	Number of schools completing incidence reports – 40% by 2006/07	

children and young people, including cases of racial harassment (LAA Target)	Services Department	Number of reported incidence of bullying which stop following effective intervention – targets to be set Number of requests for school transfers citing bullying – 20% reduction during 2006/07
Reduce the number of young people who are victims of crime (LAA Target)	Eastbourne CDRP	10% reduction by 2008/09 of victims between the ages of 10-19 yrs (346 less victims)